

Cycling Safaris

DANUBE Impressions tour 2024 Passau – Vienna Tour (Bike & Boat)

Guided Tour (guide cycling with group)
170km/105 mi | 7 nights / 8 days



It was in Passau that Sisi began her journey along the Danube as a young bride to Vienna, where she was eagerly awaited by her Emperor Franz. Follow in the footsteps of the Austrian empress by bicycle and on a nostalgia ship as you discover breathtakingly beautiful river scenery with small sleepy villages, castles and palaces set in gorgeous countryside and enjoy warm Austrian hospitality at every stage of your cycling tour. The region is a gourmand's paradise and famous for its cakes, pastries and other irresistible culinary treats. After Wiener Schnitzel, Sachertorte and apricot dumplings it'll be much easier to burn up the miles... Wines from the UNESCO World Cultural Heritage Landscape Wachau enjoy an international reputation, Linz, the capital of Upper Austria is home to the biggest church in Austria. And then there's Vienna... Enchanting, charming and perhaps slightly eccentric, the City of Waltz will capture your heart in an instant. Magnificent buildings from the imperial age bear witness to the impressive history of times gone by.

Highlights:

- Passau, the Bavarian city of 3 rivers
- The "Great Loop Schlögener Donau Schlinge"
- Cultural capital Linz
- The World Cultural Heritage Site Wachau
- The cosmopolitan city of Vienna with plenty of sights



TOUR ITINERARY

Day 1 (Sat) Passau/ surroundings

Experience Mediterranean flair in Passau, the city of three rivers. You should definitely set aside some time on the day of your arrival for a walk through the picturesque baroque city with its narrow lanes and Passau cathedral home to the largest church organ in the world. Your cycling holiday begins after embarkation (4.00 p.m.) when you sail into the sunset and Passau's magnificent silhouette with its church towers and domes slowly fades into the horizon behind you.

Day 2 (Sun) Engelhartszell – Brandstatt approx. 45 km

Breathe in the fragrance of the dense forest and freshly mown meadows. Explore the pristine countryside of the Upper Danube valley on the former towpath as it runs past sleepy villages. Small, rustic inns at the edge of the trail invite you to linger, the aroma of fresh fish grilled according to tradition on a stick wafts through the air. The Schlögener Blick observation point offers a truly stunning view of the Schlögener Schlinge where the Danube carves its way through a gorge and doubles back on itself.

Day 3 (Mon) Brandstatt – Linz approx. 24 km

Catch some fresh country air again - at lunch time, you'll reach the Upper Austrian capital of Linz. Discover the European Capital of Culture 2009 on a bright yellow miniature train (optional). The cathedral is the biggest church in Austria, the Pöstlingbergbahn the steepest adhesion railway in the world. Are you curious about the future? At the ARS Electronica Museum, you can try out some of the most impressive examples of modern technology for yourself. Make sure you don't miss it!

Day 4 (Tue) Tulln – Vienna approx. 35 km

Right in front of Vienna's entrance, embedded in a breathtaking scenery, the monastery of Klosterneuburg is situated. You can already see the dome of this 900 year old baroque building from a distance. "Kahlenbergerdorf" with its wine taverns is only a hop from the shipping pier and definitely worth a visit. After a stroll through the vineyards, you can enjoy the panoramic view over Vienna. During a city tour by bus in the afternoon. You will pass most of the numerous and famous sights and have a guided walking tour though the historic centre of Austria's capital (optional, not included).

Day 5 (Wed) Vienna Rest Day

On a city tour of Vienna all the sights are within reach from the saddle of your bike or on the HOP ON HOP OFF bus (optional). The magnificent Ringstraße will remind you of times long past and inviting coffee houses will tempt you with delicious Viennese cakes and pastries, while the Naschmarkt market is a feast for all the senses. End the evening on a magical note with a concert of waltz and classical operetta music in Sisi's summer residence (optional).

Day 6 (Thu) Wachau / Krems - Melk approx. 37 km

An unforgettable day in the picturesque Wachau. Cycle through delightful wine-growing villages surrounded by terraced vineyards and apricot trees. The charming little town of Dürnstein with its narrow lanes is an absolute highlight. In Spitz – one of the most famous wine-growing villages in the World Cultural Heritage Landscape – you can discover the first rate famous Wachau wines.

Day 7 (Fri) Grein - Mauthausen approx. 36 km

A beautiful and varied route lies ahead of you, offering a wide range of experiences! Starting from the medieval town of Grein (home to Austria's oldest theater, visit optional) you'll cycle through the picturesque hinterland of the Strudengau region. With a bit of luck, you may even be personally guided through the romantic Clam Castle by the castle's lord. Additionally, you'll take a journey back in time to prehistory at the Celtic Village in Mitterkirchen. The Mauthausen Memorial, a WWII concentration camp memorial site, is situated on a hill near the town.

Day 8 (Sat) Passau/ surroundings

Enjoy the first rays of sun and the early morning tranquillity one last time from the deck of the ship before you reach Passau/ surroundings, your heart bursting with memories. Disembarkation: approx. 9 a.m. We recommend that you do not make any arrangements for onward trains departing before 10.30 a.m. To be on the safe side, later departure times would be even better.

We reserve the right to make changes to the itinerary, in case of flood or low tide the shipping company reserves the right to bridge parts of passages with buses. In extreme case the shipping company reserves the right to cancel the journey on short notice. No legal right shall be constituted of both situations. (Water level is force majeure). The same applies for officially ordered – previously not announced – repair work on locks or bridges or in case of undeserved breakdown of engine and power unit. Please be aware that your ship MV Theodor Körner, like all other ships on the Danube, is not only your hotel but also a machine, working with engine power also during night. Especially crossing locks and bridges – and the preparation work – might cause noises. If you are sensitive to noises please bring your own earplugs.

2024 TOUR DATES & COSTS

MV SWISS CROWN (Saturdays)

TOUR DATES: Saturday start from June 8, July 6, September 21
(additional dates from 10 pax up on request)

SEASON 1: April

SEASON 2: May, July, August

SEASON 3: June, September

Per person	Group Tour	Group Tour	Group Tour	Group Tour
	Standard	Comfort	Mini Suite	Superior
Season 1	€1110	€1300	€1410	€1510
Season 2	€1210	€1400	€1510	€1610
Season 3	€1310	€1500	€1610	€1710

There is a 55% supplement for those who want a single cabin, limited cabins available – only available in category Standard.

Child reduction available. Please contact us in the office for more details.

WHAT THE TOUR PRICE INCLUDES

- 7 nights in outside cabins with private facilities and air condition
- Cycling Guide
- Ferry rides
- Helmet rental (adults only)
- Port charges
- Program according to itinerary from/to Passau
- Captains greeting and Welcome cocktail
- Full board: rich breakfast buffet, lunch on board (non-cyclists) or packed lunch (cyclists), afternoon coffee break, dinner (2/3 dishes to choose from)
- Gala-dinner with farewell cocktail
- Board musician
- Tour guide on board (does not cycle with the group)
- Daily information meeting
- Detailed travel documents, cycling guide App incl. voice navigation, gps tracks per cabin

Not included in the tour price:

- Drinks onboard (drinks package to be chosen on boarding)
- Meals ashore
- Entrance fee to excursions/attractions (individual visits)
- Tips for crew and guides
- Cycling guide accompanying you each day – this is available as part of our comfort relax package (Group Tour)

Saturday Boat Departure Dates:

April 27, May 25, June 8, June 15, June 22, June 29, July 6, July 13, July 20, July 27, August 17, August 24, September 7, September 27

**Also available on boats departing on June 8, July 6, September 21:
Comfort Relax Package - with Cycling Tour Guide (+€210 per person)**

(further dates up on request - min. 10 participants)

Excursions

The following optional excursions (not included in the tour price) can be booked separately or as a package directly and only onboard.

Linz: City Toru by Linz City Express

Vienna: City tour by bike or HOP ON HOP OFF bus Classical waltz & operetta concert in one of Vienna's famous palaces

Wachau: Krems City tour by excursion train Wine tasting with a local wine grower

Grein: Visit of Austria's oldest theatre

Optional extra's

- Bike rental available for a supplement of €90 / E-bikes €190
- Bringing your own bike €30 / E-bike €40, pannier and bike lock available
- Insurance against theft and damage of the rental 21-speed hybrid bike €18 / per week or rental E-bike €50 / week (not insured deliberate damages)
- Additional nights in Passau 4* Hotel: €85 per person sharing / €130 single occupancy

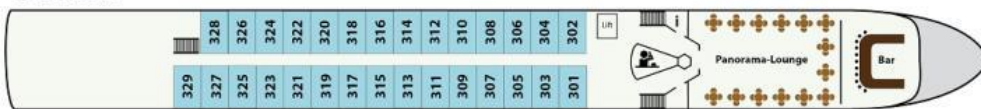
THE BOAT

MV Swiss Crown (all cabins with shower/toilet)

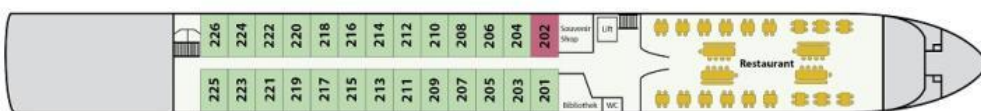
Stylish, elegant and timelessly beautiful - this is how the premium ship MS Swiss Crown presents itself as it glides gently along the Danube river. You will immediately feel at home on board as soon as you enter the spectacular foyer. Designed in warm wood tones, the ship radiates a comfort and leaves nothing to be desired. The simple elegance of the timelessly beautiful staterooms, which are decorated with great attention to detail, will inspire you. Sit back, enjoy the serene, relaxed atmosphere, the fantastic views of breathtakingly beautiful natural landscapes, sometimes from the bicycle seat, sometimes from the inviting, partially covered sun deck. Let yourself be pampered by the friendly, accommodating crew and create on board relationships alongside memories to last a lifetime.



Oberdeck



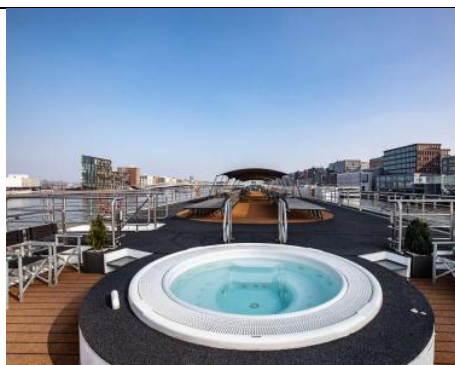
Mitteldeck



Hauptdeck



Standard
 Komfort
 Superior
 Mini-Suite



The 68 outward-facing cabins are spacious 14qm and convince with elegant, comfortable interior. The cabins have a double bed (can be separated to 2 single beds), shower/WC, hairdryer, SAT TV, safe, coffee maker and individually adjustable air conditioning.

3 passenger decks:

Standard: Main deck, double bed to be separated, windows not to be opened

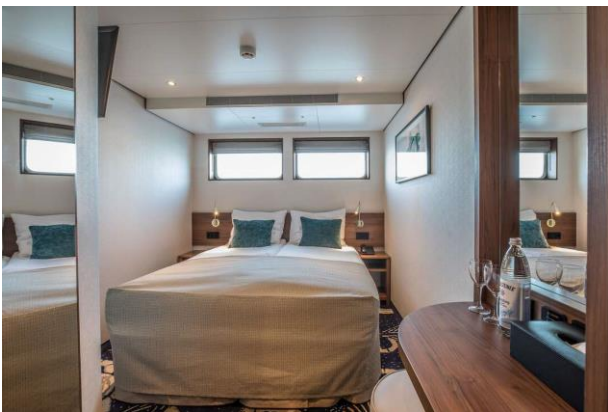
Comfort: Middle deck, double bed to be separated, windows be opened

Superior: Upper deck, double bed to be separated, private balcony

Minisuite: Middle deck, double-bedded to be separated, windows to be opened, minibar)

The **68** outward-facing cabins are spacious **14 m²** and convince with elegant, comfortable interior.

The cabins have a **double bed** (can be separated to **2 single beds**), shower/WC, hairdryer, SAT TV, safe, coffee maker and individually adjustable air conditioning.



STANDARD cabin:

the approx. 14 m² cabins are located on the **main deck**, equipped with a double bed (which can be moved apart) and smaller, raised windows (NOT openable). In some cabins a 3rd bed (bunk bed) can be used for children.



COMFORT cabin:

the approx. 14 m² cabins are located on the **middle deck**, equipped with a double bed (which can be moved apart). The panoramic window can be opened.



SUPERIOR cabin:

the approx. 14 m² cabins are located on the **upper deck**, equipped with a double bed (which can be moved apart) and private balcony.



MINISUITE:

the approx. 16 m² cabin is located on the **middle deck**, equipped with a double bed (which can be moved apart), panoramic window, minibar and coffee station

We will gladly accept your non-binding cabin request when booking. However, information about cabin numbers is expressly not part of the contract.

GENERAL INFORMATION

Restaurant / Kitchen

The full board consists of: breakfast, packed lunch for bikers (resp. light meal for guests on board), dinner. On four evenings you have the choice between 2-3 menus. Not claimed meals cannot be refunded. Your table number will be provided during boarding. Special meals have to be ordered latest by 3 weeks prior departure.

Board- und Excursion program

A musician will provide evening entertainment. On the last evening the crew invites you to an evening of entertainment, good mood and fun! Excursions can only be booked on board with our cruise director.

Internet / Mobile phone

If you want to be reachable on board in urgent cases, please leave our office number at your family. We will forward you the message as soon as possible. The ship also offers Wi-Fi (chargeable). We only have very limited internet connections on board. If possible we send urgent E-Mails for you.

Life on board

There is no special dress code on board. Casual clothing is sufficient. We suggest appropriate clothing for the bike-tours as e.g. cycling pants, bike-gloves, sportive shoes, etc...sun- and rain protection – please don't forget! warm sweater for rather cool evenings on deck. Swim wear for using the opportunity on hot days along your bike-leg.

Medical care

For emergency cases doctors are also shortly available ashore.

Smoking on board

Please note that the whole ship (incl. cabins, restaurant, café) is absolutely a non-smoking area. Smoking is allowed only on the open sundeck.

Tipping

On cruise ships gratuities will be collected at the end of the cruise in a box at the reception. This form of giving a tip is useful to credit all crewmembers. A noncommittal directive would be approx. € 5,- to 6,- per person and day. The cruise director is not included in this system. If you have been satisfied with his work during the week – there will be a tip box available directly at the cruise director's desk.

BIKE AND FITNESS

21-gear ladies bikes come as standard bikes with 28" wheels in frame sizes 46 / 51 / 56 cm .

For men taller than 186 cm we offer men frames.

Our bicycles are equipped with:
1 good sized waterproofed pannier bag,
1 handlebar bag, repair kit, air pump, lock



Electric bikes, children's bikes, specialized equipment for children upon request
Cycling clothes are available for purchase on board.

Tour profile:

The cycle path is completely flat, at times on a gentle downhill slope and is ideal for bikers with less experience and children. The tour is rated easy on mostly flat terrain.

WHAT TO BRING

We would recommend that you bring padded cycling shorts and / or a gel saddle cover which will make your days cycling more comfortable. Cycling gloves are also a good investment, as are hard-sole shoes which will help protect your feet. And don't forget raingear including a rain jacket, rain pants and slip-on boots. A hat and sunglasses will protect you from getting too much sun and, in the evening, mosquito repellent should ensure a good night's sleep. Finally, please try to pack lightly.

TRAVEL INFORMATION

Flying to Passau

- **Munich Airport (MUC)**

The closest airport to Passau is Munich Airport (München Flughafen / MUC) with its huge number of cheap flights to mostly German and European destinations.

Passau is around 160 km (100 miles) from Munich Airport. Driving time is around 90 minutes. From the airport, take Autobahn A92 towards Deggendorf and turn southeast onto Autobahn A3 when reaching the Danube.

It is possible to book a transfer from/to Munich city centre to Passau/barge €330 one way (1-8 people), from/to Munich airport to Passau/barge €280 one way (1-8 people)

You can also arrange your own transfer from Munich Airport to Passau by train from nearby Freising station. They run at least once an hour, and you can purchase tickets after you arrive in Munich (about € 22-28,- per person). You'll need to take a 20-minute bus ride from the airport to the Freising station (they leave at 21 after each hour), connecting with a train from Freising to Passau (about 1 hour, 45 minutes).

High-Speed Inter-City-Express Trains to Passau

Passau is on the high-speed railway line that links Frankfurt am Main and Vienna. Luxury, high-speed Inter-City Express (ICE) trains run on this route roughly every two hours.

The ICE trains to Frankfurt am Main Hauptbahnhof (Main Station) take around four hours and stop en route in Plattling (30 minutes), Regensburg (1h), Nürnberg / Nuremberg (2h), and Würzburg (3h). Many trains continue to Frankfurt International Airport and on to Cologne (Köln) and further destinations.

From Passau to Vienna on the ICE train is three hours with a stop en route in Linz (1h10).

- Passau station (Bahnhof) is at the edge of the old town in Donaustadt. From the station to the heart of the old town is an easy fifteen-minute walk through pleasant shopping streets.

Regional Trains to Passau

Many regional trains also pass through Passau. Although slower than the ICE, regional trains can be significantly cheaper and on short distances, the time differences can be negligible. In addition, discount tickets such as the Bayern Ticket and Schönes-Wochenende-Ticket may be used on regional trains only.

German discount tickets are not valid on regional trains into Austria but the slower trains are cheaper than the ICE. Regional trains run to Linz (90 min to 2h) and Vienna (5h).