

# Cycling Safaris

## DUBLIN / WICKLOW Self-Guided Tour 2024



Nestling between the sea and mountains, Dublin has an unrivalled setting, yet few visitors move beyond the city centre to experience this! With some gentle cycling we explore the gentle Southside coast and the foothills of the Dublin Mountains. We then head into the haunting beauty of the Wicklow Mountains where the bustle of a capital city will seem a million miles away.

The roads are all tarmac and the route is designed to ensure that you spend most of the cycle on quiet back roads. To experience the majestic scenery of this area the route does have some climbs, so it is worth getting a few weekends training on a bike in varied terrain before coming thus ensuring that you can fully enjoy the tour.

### TOUR ITINERARY

#### DAY 1 ARRIVAL TO DUBLIN / DUN LAOGHAIRE

Typically, you will stay in the harbour town of Dun Laoghaire, a well known Dublin seaside suburb. The cost of a taxi from Dublin airport to Dun Laoghaire is approx. €50. Alternatively, there is blue coloured Air Coach, departing from just outside the Arrivals Hall at Dublin Airport, which will take you to Dun Laoghaire. The return ticket costs €16 and the journey should take around 50 minutes.



Once you have checked into your accommodation, you can then spend the rest of the day exploring Dublin's beautiful coastline or else take a 20 minute train journey into Dublin city to see the sights and sounds that have made Dublin such a lively and popular destination.

**DAY 2****DUBLIN TO ENNISKERRY****18 miles / 30kms**

You collect your bikes from our shop in Dun Laoghaire after which you begin the day in a leisurely fashion with a cycle along bike paths and quiet roads to the coastal towns of Dun Laoghaire and the charming village of Dalkey, with its many famous residents where you can stop for a coffee or early lunch. You continue along the scenic Vico Road with spectacular views across Killiney Bay.

You then head inland cycling along green fields to the village of Enniskerry where you overnight. A transfer can be arranged this evening to the famous Johnnie Foxes Pub, the highest pub in Ireland ([www.jfp.ie](http://www.jfp.ie)). Here you can enjoy a uniquely traditional Irish night with good food and Guinness, along with entertainment from local musicians.

**DAY 3****ENNISKERRY TO GLENDALOUGH****30 miles / 48kms or 24 miles / 39kms**

In the morning you have the chance to visit the beautiful Powerscourt Gardens before heading over the stunning Sally Gap Road all the way to Roundwood for lunch.



After lunch you have head via Lough Dan into the village of Laragh for the night. Laragh is located beside the monastic village of Glendalough with its ruined abbey and distinctive round tower

**DAY 4****REST DAY IN GLENDALOUGH**

Today there is the opportunity to relax in your tranquil surroundings in Laragh/Glendalough and walk one of the numerous signed ways around the surrounding lakes.

For more information Glendalough Visitors Centre  
[www.heritageireland.ie/en/glendaloughvisitorcentre/](http://www.heritageireland.ie/en/glendaloughvisitorcentre/)

**DAY 5** **GLENDALOUGH TO AUGHRIM**

**25miles / 40kms - 30miles / 51 km**

You have the option of 2 different routes today both of which head out on the east bank of the Avonmore River.

You can choose to visit Avondale House and Forest Park, once the home of one of Ireland's greatest political leaders. The village of Avoca, setting for the hugely successful BBC TV series Ballykissangel, is another option or the wild mountain scenery on the ancient Military Road, built to allow British troops access the rebellious tribes of these formerly heavily forested valleys. All routes come together in our overnight stop of Aughrim a pretty village with much evidence in its buildings of its former glory as a granite quarrying and stonecutting centre.



**DAY 6** **AUGHRIM TO WICKLOW**

**30miles /48kms or 40miles/65km**



Today offers 2 different route options to match your mood and energy levels.

You can cross the low coastal hills to ride north along the coast taking a dip in Brittas Bay, a beautiful Blue Flag beach or venture into the wooded hills on virtually traffic free roads through remote villages to view for your self the mysterious Motte Stone before descending to the coast and Wicklow, a friendly seaside town with Viking origins.

**DAY 7** **WICKLOW VIA ENNISKERRY TO DUBLIN**

**31 miles / 50kms**

Your last day on the bike will take you inland again back towards the village of Roundwood for a morning coffee.

You can then take a different route along beautiful country roads to the village of Enniskerry where you can have lunch before continuing back into Dublin city for a final night on the tour.



## 2024 TOUR DATES

Our self guided tours can start any day from 15<sup>th</sup> April to 4<sup>th</sup> October

## 2024 TOUR PRICE

- €1045.00 per person sharing off peak
- € 50.00 per person supplement in July and August
- € 350.00 single occupancy
- €190.00 solo traveler / an additional charge if travelling on your own to cover the costs of the transfers

Note bike hire is separated out of the tour price

€100.00	24 speed touring bike with water bottle cage, lock, helmet and a small pannier bag
€250.00	Electric - bike

## WHAT THE TOUR PRICE INCLUDES

- Seven nights accommodation in small hotels and guesthouses
- 4 breakfasts\*
- Route details in the form of GPS Tracks plus one set of printed details and maps per booking ( not per person )
- Luggage transfer each day
- Hotline service in case of any problems

### Meal expenses

\*Breakfasts are usually included in the tour price. However, since Covid hit in 2020 some of the accommodation in Enniskerry and Laragh/Glendalough don't offer breakfast any longer. But there is a café/restaurant next door (Wicklow Heather in Laragh and in Enniskerry Inn in Enniskerry). Breakfast for the other 4 nights is included.

Its possible to upgrade to a hotel in Laragh/Glendalough (Glendalough Hotel, <https://www.glendaloughhotel.com/>) for the 2 nights. Breakfast will be included here. The cost for the upgrade is €20 per person per night.

In Enniskerry it is possible to upgrade to Summerhill House Hotel <https://summerhillhousehotel.com/> . They offer a package which includes breakfast and a 3 course dinner plus prosecco reception. Prices on request.

Clients buy their own lunches and dinner throughout the trip. You should budget between €15 and €20 for lunch each day. An evening meal each night should cost somewhere between €20 and €35.

We would recommend that you head up to Johnny Foxes pub (a few miles outside Enniskerry) for dinner when you are in Enniskerry (they also typically have music in the main bar at weekends, for more details on the pub you can go to [www.jfp.ie](http://www.jfp.ie))

### Are there facilities to change money?

There are banks in Dublin (open Monday - Friday: 10.00am - 4.00pm). There is also a cash point machine in Enniskerry. Credit cards are also widely accepted.

## BACK UP SUPPORT

---

As this is a self led trip you do not have the back-up of a guide and support van. Our aim is to allow you feel like an independent traveller, free to cycle each day at your own pace while at the same time having the security of knowing that your luggage will be waiting for you in your next accommodation.

If for any reason you are unable to cycle please contact our Dublin office (+353 1 2600749) so we can liaise with the luggage transfers to organise the transfer of bike(s) and person(s). Please note that you will be charged for any additional runs made on your behalf.

Our bikes are serviced after each tour so they should be humming perfectly! If you experience small problems with the bike (i.e., a puncture) you will have a spare tube, pump and tyre lever. You can of course phone our office if you experience any major problems (+353 1 2600749).

## WHAT TO BRING

---

\*We would seriously recommend that you bring **padded cycling shorts and / or a gel saddle cover** which will definitely make your days cycling more comfortable. Cycling gloves are also a good investment. You can also bring your own saddle which should be possible to attach to our bikes.

\*We provide small **pannier bags** (not waterproof) in which you can keep your day-to-day items. Otherwise you may prefer to use a daypack and there are back carriers on each bike for this purpose.

\*We do not provide **rain gear** so be sure to bring your own light weight waterproofs.

\*We do provide **helmets** on our Wicklow tour. **But we recommend to bring your own for better fit.**

\*Don't forget **sun cream, sunglasses , sun hat** as well as a bathing suit for that refreshing dip in the Irish Sea!

\*Our rental bikes don't have **lights** - no problem on the long summer evenings, but if you are travelling in May or September, please bring your own light or high-visibility vest.

\*Finally if you wish to use **toe clips** please bring your own pedals with toe clips which can be attached to our bikes (the pedals on our bikes do not accommodate toe clips).

## BIKE RENTAL & FITNESS

In 2024 we will be renting **GIANT CITY** bicycles for our tours.



To see the specification for this you can visit the website:

[www.giant-bicycles.com/gb/escape-city](http://www.giant-bicycles.com/gb/escape-city) ( Gents model )

[www.giant-bicycles.com/en-ie/bikes/model/alight.2.city/28581/99470/](http://www.giant-bicycles.com/en-ie/bikes/model/alight.2.city/28581/99470/) ( Ladies model )

Bikes come in different sizes and in gents and ladies style frames.

It is very important you give us your height on booking so that we can allocate the correct bike to you.

The advantage of a cycling safari is that because you have your own map and route details you can enjoy each day's cycle at your own pace. This is a moderately difficult route as there are many hill climbs so we would recommend that you do try to do some cycling before the tour in order to make your week more enjoyable. Try to get out for a few hours cycling during the weekends coming up to your trip and if possible do it on varied terrain and include some hill climbing.

## ACCOMMODATION

The accommodation is allocated on a twin sharing basis. We stay in a mixture of B&Bs and small hotels, where we hope to fuse the best standard we can get with the warmest welcome. We ensure en suite facilities. We do reserve the right to change the accommodation around during the tour, but we will always provide a high standard.

Below is the accommodation we typically use on this tour but of course subject to availability

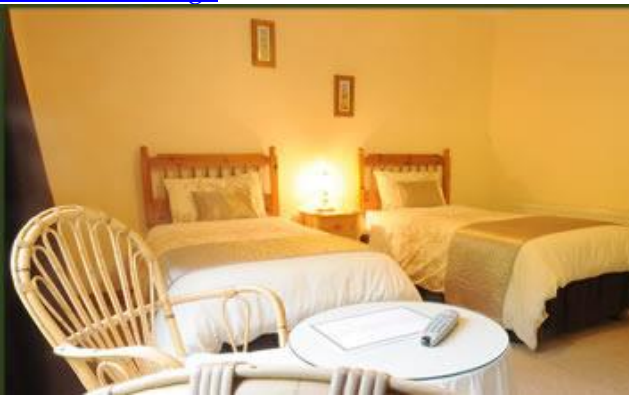
**Day 1 & 7 : Dun Laoghaire, Co. Dublin**  
[The Haddington Hotel](#)



**Day 2 & 3: Enniskerry**  
[Enniskerry Inn](#)



**Day 3 & 4: Laragh/Glendalough**  
[Pinewood Lodge](#)



**Day 3 & 4: Laragh/Glendalough**  
[Heather House B&B](#)



**Day 5: Auhrim**  
[Meath Arms Country Inn](#)



**Day 6: Wicklow**  
[Glengorse B&B](#)



### **What if someone needs to contact me during the tour?**

If you have a mobile phone which operates on the GSM 900 system, this will be compatible with the Irish system. We will send you a full list of where you are staying on the tour before departure

### **Extra Accommodation.**

If you are planning to spend a few days in Dublin at the beginning or end of the tour, the following websites will give you some good ideas about accommodation and things to see and do while visiting our capital city

([www.visitdublin.com](http://www.visitdublin.com)) Dublin Tourism,

Calling within Ireland - 1850 230 330      Calling within the U.K. - 0800 039 7000

Calling from any other country - +353 66 979 2083

[www.dublinuncovered.net](http://www.dublinuncovered.net)    [www.indublin.ie](http://www.indublin.ie)

Other accommodation websites for Dublin/Ireland

[www.discoverireland.ie](http://www.discoverireland.ie)

[www.dublinhotels.com](http://www.dublinhotels.com)

[www.irelandhotels.com](http://www.irelandhotels.com)

[www.goireland.com](http://www.goireland.com)

[www.hiddenireland.com](http://www.hiddenireland.com)

[www.booking.com](http://www.booking.com)

---

## **GENERAL INFORMATION**

---

### **Weather**

Because we are an island located near the gulf stream Ireland has a very mild climate making it ideal for cycling. We recommend that you bring your rain gear as well as your sun hat as a day that starts with rain can end with glorious sunshine! The temperature range during the summer is between 15 and 22 degrees centigrade (60 to 72 degrees Fahrenheit)

### **Visa requirements**

If you hold an EU passport you only need to make sure your passport is valid for the period of your stay. You will need photo identification travelling between Britain and Ireland.

All other nationalities require a passport that is valid for 3 months beyond the intended length of stay. Most nationalities including the USA, Canada, Australia and New Zealand do not require visas for Ireland and receive an automatic 90 day visitor's visa on arrival. If your nationality is not mentioned here you should check with your travel agent or consular office.

### **Electrical current/Mobile Phone**

The standard electrical supply is 220 volts AC (50 cycles). To use small appliances mainland European visitors may require a plug adaptor to fit our 3-pin flat or 2-pin round wall sockets. The mobile phone system in use is a digital GSM 900 system.

### **Websites on Ireland**

Some recommended websites on Ireland that might help you organise your trip if you are planning to spend more time in the country before or after your holiday with us.

[www.discoverireland.com](http://www.discoverireland.com) – Irish Tourist Board (Failte Ireland) official website providing a wealth of information on all regions of the country.

[www.heritageireland.ie](http://www.heritageireland.ie) info on historical sites